



ALDO ALESSIO REGATTA

St. Francis Yacht Club

August 26-28, 2011

SAILING INSTRUCTIONS

1. RULES

- 1.1** The regatta will be governed by The Racing Rules of Sailing (RRS), and the Sailing Instructions (including Attachments A, B & C). For One Design J/105 Fleet One Class rules and for One Design J/120 Fleet Five Class rules will replace the National Association Class Rules. For IRC Divisions: the Ocean Safety IRC Rule 2011, Parts A, B and C shall apply.
- 1.2** All competitors are required to wear life-jackets or other adequate personal buoyancy while racing. RRS 40 is changed as follows: The "Y" flag will not be displayed.

2. ENTRIES

Eligible boats shall complete registration online (www.stfyc.com) prior to 0930 hours on August 26, 2011.

3. COMMUNICATION WITH COMPETITORS

- 3.1** A Competitors' Meeting will be held at StFYC Friday, August 26 at 0930 hours.
- 3.2** Official Notices will be posted on the Official Regatta Notice Board located in the hallway adjacent to the side (Regatta) entrance of StFYC.
- 3.3** Changes to the Sailing Instructions will be posted by 1000 hours on the day they are to take effect, except any changes to Sailing Instruction 4, Number & Schedule of Races, will be posted by 1900 hours on the day before they take effect.
- 3.4** Signals made ashore will be displayed from the flagpole located on the StFYC Race Deck.
- 3.5** Questions regarding the Sailing Instructions may be submitted in writing to the Race Committee. Questions and written responses will be posted on the Official Regatta Notice Board.
- 3.6** Competitors should monitor **VHF 69** for on the water communication with the Race Committee.

4. NUMBER & SCHEDULE OF RACES

<i>DAY & DATE</i>	<i>RACE #</i>	<i>TIME OF FIRST WARNING SIGNAL</i>	<i>CLASSES</i>
Friday – August 26	1	1100 Hours	All
Saturday – August 27	2	1100 Hours	All
	3	Immediately following Race 2	All
	4	Immediately following Race 3	Farr 30
Saturday – August 28	5	1100 Hours	All
	6	Immediately following Race 5	Farr 30

5. RACING AREA

The intended racing area will be the Central San Francisco Bay and its approaches.

6. COURSES & MARKS

- 6.1** The courses and marks for Friday, August 26 and Sunday, August 28 are described in Attachment "A".
- 6.2** The courses and marks for Saturday, August 27 are described in Attachment "B".
- 6.3** A placard designating the course will be displayed from the Signal Boat.

7. RESTRICTED AREAS

- 7.1** Boats shall not pass through the line bound by the following objects and the closest point ashore:
 - (a) The "H" Beam (located approximately 200 yards west of the St. Francis YC).
 - (b) The Bell Buoy off the west end of Alcatraz Island.
 - (c) All breakwaters in the vicinity of Fisherman's Wharf and Aquatic Park.
 - (d) Round orange buoys set off of Piers 39, Pier 45, and the SF Marina entrance, if set.
 - (e) Anita Rock and its buoy.
 - (f) The South Tower of the Golden Gate Bridge.
- 7.2** The above restricted lines are defined as obstructions.
- 7.3** A boat that breaks this rule may not correct her error and shall retire. This changes RRS 28.1.

8.0 THE START

- 8.1** The intended location of the starting area is between the west face of Treasure Island and the south edge of the Berkeley Circle.
- 8.2** The Starting Line will be between a staff displaying an orange and yellow striped flag on the Starting Line Signal Boat and a red inflatable cone mark, or an orange and yellow striped flag on a Starting Line Mark Boat.
- 8.3** For one-design classes, the class flag will be a white flag with a black class insignia. For the IRC divisions, the class flag will be a white flag with a black letter representing the division.
- 8.4** A boat shall not start later than four minutes after her starting signal. A boat that starts later than four minutes after her starting signal will be scored DNS. This changes RRS A5.

9. RECALLS

The Race Committee may hail the sail number(s) of the boat(s) identified on the course side of the starting line after the starting signal by VHF. The failure of a hail, the failure of a boat hearing the hail or the order of the hails shall not be grounds for redress. This changes RRS 62.1(a).

10. THE FINISH

- 10.1** Finish Line (T): between a staff displaying an orange and yellow striped flag on the Signal Boat and a round orange buoy set to port (when looking downwind).
- 10.2** Finish Line (RD): between Mark A (outer StFYC Buoy) and a yellow placard on the StFYC Race Deck.

11. TIME LIMIT

- 11.1** For Friday August 26 the Time Limit for all courses listed on Attachment A is 9 hours. A boat failing to finish within 2.5 hours after the first boat in her class sails the course and finishes will be scored "Did Not Finish" by the Race Committee. This Changes RRS 35.
- 11.2** For Saturday August 27 the Time Limit for all courses listed on Attachment B is 4 hours. A boat failing to finish within 30 minutes after the first boat in her class sails the course and finishes will be scored "Did Not Finish" by the Race Committee. This Changes RRS 35.
- 11.3** For Sunday, all IRC Divisions, the Time Limit for all courses listed on Attachment A is 5 hours. A boat failing to finish within 1.5 hours after the first boat in her class sails the course and finishes will be scored "Did Not Finish" by the Race Committee. This Changes RRS 35.
- 11.4** For Sunday and only for One Design divisions, the Time Limit for all courses listed on Attachment A is 3 hours. A boat failing to finish within 30 minutes after the first boat in her class sails the course and finishes will be scored "Did Not Finish" by the Race Committee. This Changes RRS 35.

12. PROTESTS AND REQUESTS FOR REDRESS

- 12.1** Protests and requests for redress may be written on Standard US SAILING Protest Forms. Protest Forms are available at the Front Desk located adjacent to the Club main entrance. For all divisions and classes, protests, and requests for redress shall be lodged with the Front Desk within 60 minutes after the arrival of the Race Committee Signal Boat ashore or 90 minutes after the last finisher in that division, whichever is later. This time limit will be posted on the Official Notice Board.
- 12.2** The time and place of all hearing(s), the boat(s) protesting, boat(s) being protested and boat(s) requesting redress will be posted on the Official Notice Board within 30 minutes of the close of the filing period stated in 12.1. This shall serve as notification as per RRS 63.2.
- 12.3** For protest filed on Friday, August 26, hearings will be scheduled for Saturday after racing in accordance with SI 12.2.
- 12.4** A request to reopen a hearing on the last day of racing must be delivered to the front desk of the StFYC within 60 minutes of the parties to the protest receiving the Jury's decision, oral or written.

13. DISPOSAL OF WASTE OR TRASH

No boat shall discharge trash of any kind into the San Francisco Bay. Any boat observed breaking this rule is subject to protest only by the Race Committee or Protest Committee. The penalty for a breach of this rule, which may include disqualification from a race, is at the discretion of the Protest Committee. This changes rules 60.1(a) and 64.1(a).

14. SCORING

- 14.1** One race must be completed to constitute a series.
- 14.2** RRS A2 is changed to: Each boat's final score will be the sum of her scores for all races.
- 14.3** For IRC divisions, each boat's corrected time (CT) shall be calculated to the nearest second by multiplying her elapsed time (ET) by her TCC ($CT=ET*TCC$).

15. PRIZES

- Trophies will be awarded based upon class participation.
- 15.1** The Aldo Alessio Perpetual Trophy will be awarded to the boat with the best overall performance in the IRC Division in the Ocean Race on Friday.

Additional Notices

BERTHING

All yachts competing in the event may be moored free of charge at the StFYC guest docks one night prior to the beginning of racing and one night after racing concludes.

ATTACHMENT A

OFFICIAL DESCRIPTION OF MARKS AND COURSES

For Friday, August 26 and Sunday, August 28

MARK	DESCRIPTION
A	Outer mark (yellow sphere) off St. Francis Yacht Club
PB	Point Bonita Buoy – Fl (2+1) R 6s Bell
X	Yellow/Blue sphere “X” Golden Gate Yacht Club
7	Red Bell Buoy - R “2” Fl 6s nm Northwest of Treasure Island
6	Yellow Can “M” 200 yd North of Ft Mason Docks (or temporary orange ball)
8	Red Bell Buoy - R “4” Fl 4s Horn 1 nm East of Point Blunt
15	Inflatable Yellow Cone Approx. 0.5 nm East of Yellow Bluff
16	Yellow Can “TB” (Tom Blackaller) .2 NM East of Fort Point
17	Green/Red RG “HR” Fl (2+1) R6s Harding Rock
18	Green/Red Bell Buoy - RG “BR” Fl (2+1)G6s Bell, Blossom Rock

COURSE	ROUNDING ORDER	Approx. DISTANCE (nm) Ref. only
A	Start → “PB”p → “8”p → “16”p → Finish“RD”	19
B	Start → “PB”p → “X”p → “PB”p → “X”p → “16”p → Finish“RD”	24
C	Start → “PB”p → “8”p → “PB”p → “8”p → “16”p → Finish“RD”	33
D	Start → “PB”p → “8”p → “PB”p → “8”p → “16”p → “18”p → “16”p → Finish“RD”	39
E	Start → “17”p → “8”p → “15”p → “A”p → “7”p → “16”p → “18”p → “16”p → Finish“RD”	25
F	Start → “15”p → “X”p → “7”p → “16”p → “18”p → “16”p → Finish“RD”	20
G	Start → “15”p → “X”p → “7”p → “16”p → Finish“RD”	13.5
H	Start → “16”p → “6”p → “16”p → “X”p → “16”p → Finish“RD”	12
I	Start → “17”p → “8”p → “17”p → Finish“T”	11.5
J	Start → “16”p → Finish“RD”	5.8

‘p’ designates the Mark shall be rounded to port

ATTACHMENT B

OFFICIAL DESCRIPTION OF MARKS AND COURSES for Saturday, August 27

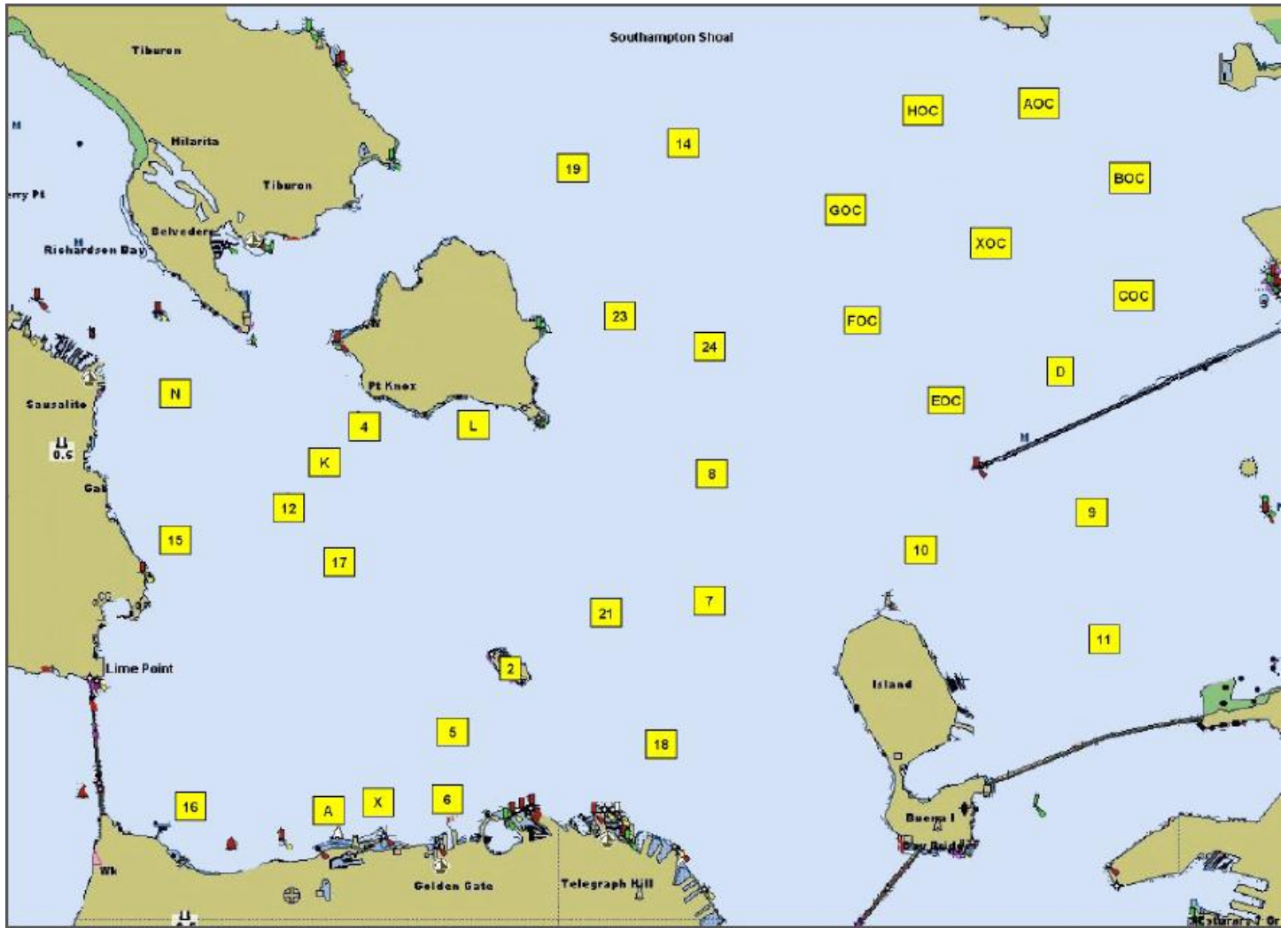
MARK	DESCRIPTION
A	Outer mark (yellow sphere) off St. Francis Yacht Club
1	Inflatable Yellow buoy set as a windward mark
2	Inflatable Red buoy set as a leeward Mark between Marks 1 and 3
3	Inflatable Yellow buoy set as a leeward Mark approx. 500 yards upwind of the Starting Line
Change of Course Mark	Inflatable yellow buoy with a black band

COURSE	ROUNDING ORDER	Approx. DISTANCE (nm) Ref. only
A	Start → "1"p → "3"p → "1"p → Finish"RD"	11
B	Start → "1"p → "3"p → "1"p → "3"p → "1"p → Finish"RD"	17
C	Start → "1"p → "2"p → "1"p → Finish"RD"	8
D	Start → "1"p → "2"p → "1"p → "2"p → "1"p → Finish"RD"	10

'p' designates the Mark shall be rounded to port

ATTACHMENT C
COMMERCIAL TRAFFIC, SAFETY

- C1 As stated in the RRS preamble to the Part 2 rules, when a boat sailing under these rules meets a vessel that is not, she shall comply with the International Regulations for Preventing Collisions at Sea (IRPCAS) or government right-of-way rules. This supplements, but does not replace the rules of Part 2.
- C2 If a commercial vessel has sounded five blasts, and/or the vessel or the Coast Guard identifies an offending boat, the Race Committee shall protest the boat, in which case the Protest Committee shall assume that the identified boat has impeded passage or violated the U.S. Inland Navigation Rules, and the identified boat shall have the burden of proving otherwise. In the case of a complaint by a Vessel Traffic or the Coast Guard, the protest time limit shall be extended up to two days after the conclusion of the regatta.
This changes RRS 60.2(a) and 61.3.
- C3 A Race Committee boat may signal a boat to alter course to avoid impeding the passage of commercial vessels by making a sound signal (horn or whistle) and pointing Code Flag V at the boat. The signaled boat shall promptly comply with the signal unless compliance would create an unsafe condition. If a boat fails to comply with such a signal, the Race Committee shall protest the boat, in which case the Protest Committee shall assume that the course alteration would not have created an unsafe condition, and the protested boat shall have the burden of proving otherwise.
- C4 A boat may be penalized independently under B1, B2 and/or B3. As prescribed in RRS 44.1, violation of any part this appendix shall not be exonerated by a “turns” or Scoring Penalty, and a resulting disqualification shall not be excludable under RRS A2. The StFYC shall cooperate with and provide relevant information to the Coast Guard or other governmental authority regarding investigations of boats impeding ship traffic or violating Inland Navigation Rules (33 CFR 83).



Central Bay Chartlet
(for reference only)